


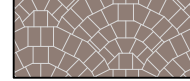

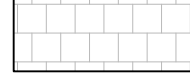
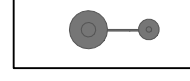
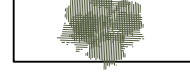


LEGENDA

-  Manto stradale
-  Verde esistente
-  Muro di contenimento in pietra
-  Pavimentazione in porfido tipo sanpietrini
-  Pavimentazione in piastrelle di porfido
-  Pavimentazione in masselli autobloccanti
-  Palo per illuminazione pubblica
-  Canalette stradali
-  Alberature esistenti
-  Pozzetto e caditoia
-  Cordolo



**COMUNE DI GIACCIANO
CON BARUCHELLA**

Provincia di Rovigo

STUDIO DI FATTIBILITA' TECNICO-ECONOMICA
PROGETTO DEFINITIVO-ESECUTIVO

**MANUTENZIONE STRAORDINARIA DI
MARCIAPIEDI E ARREDO URBANO
LUNGO VIA ROMA IN LOCALITA'
GIACCIANO**

Elaborato:

Tav. 02

Stato di progetto: Planimetria ambito intervento e sezioni

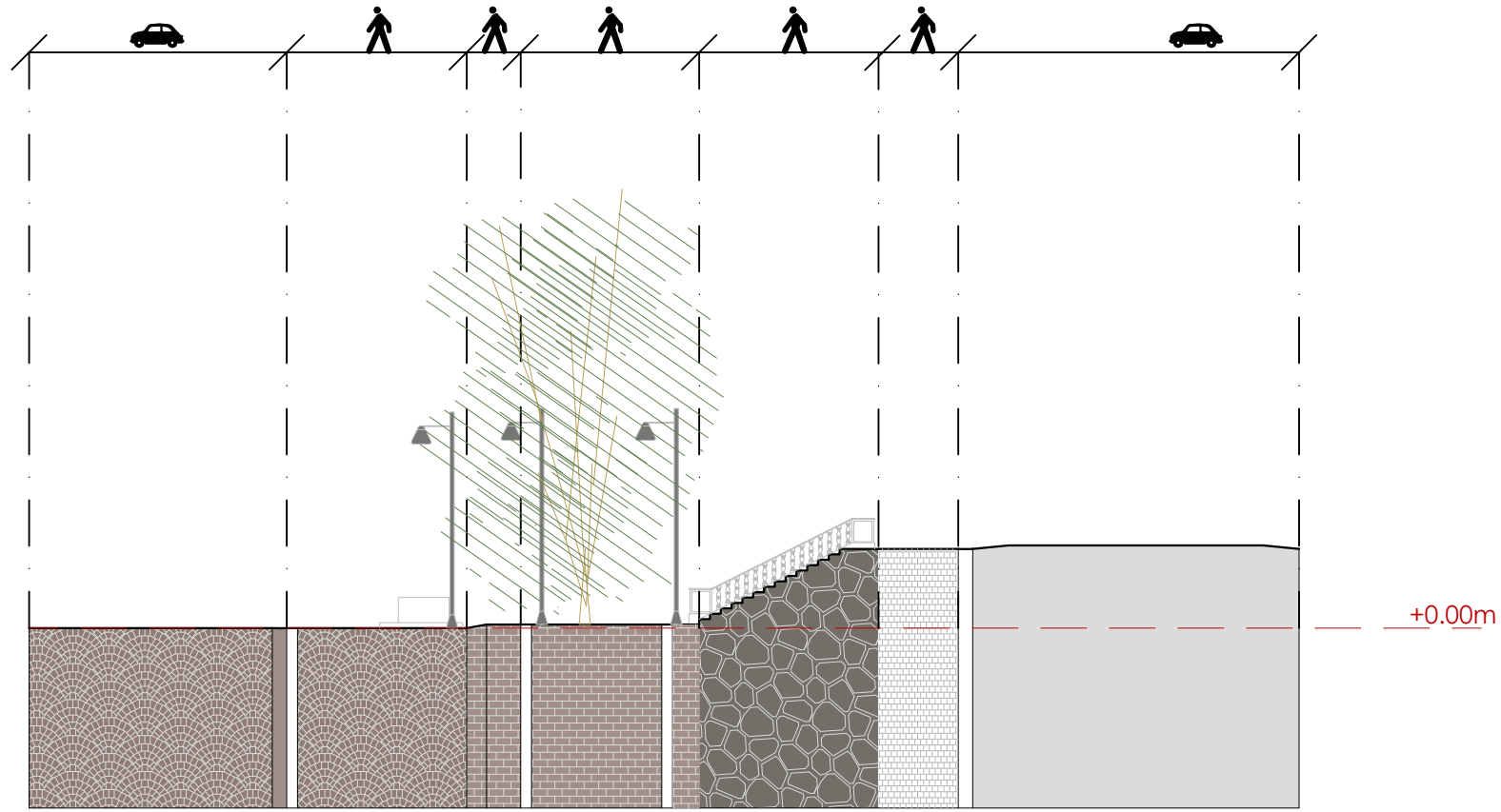
Data:

Luglio 2022
Rev.00

IL RESPONSABILE DEL
PROCEDIMENTO
Geom. Riccardo Resini

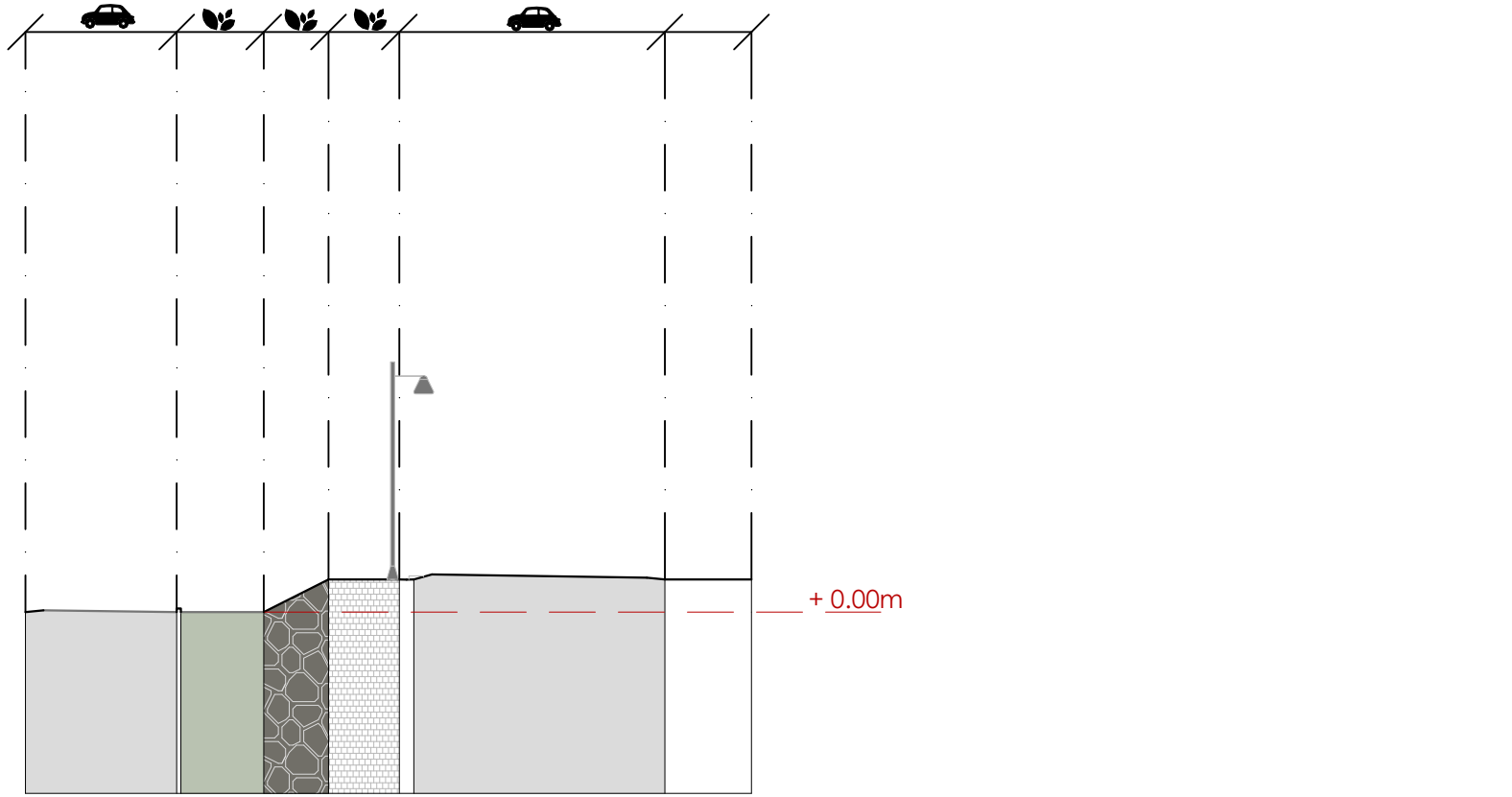


Planimetria dello stato di progetto scala 1:200



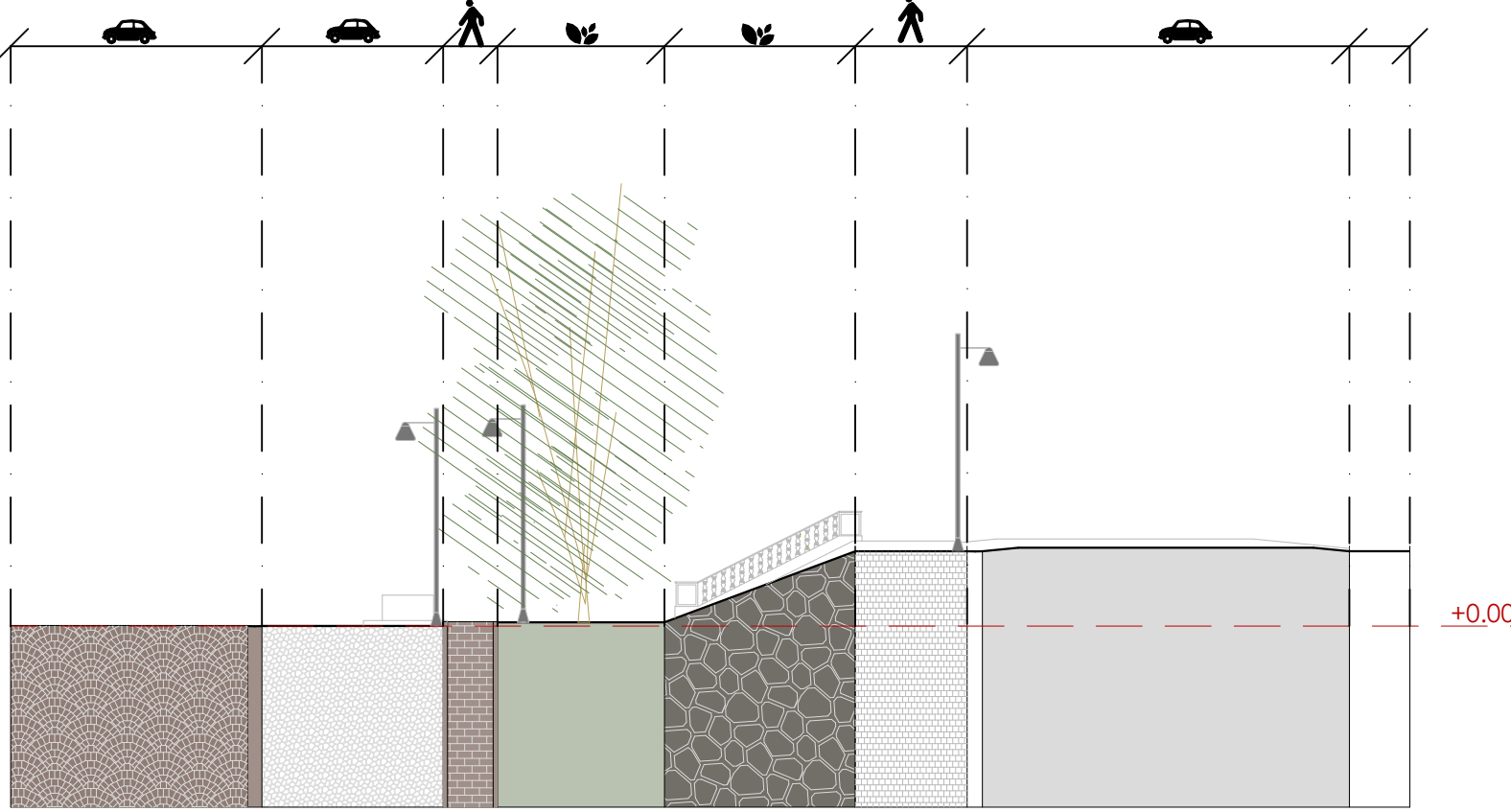
DISTANZE PARZIALI	7.17	5	1.5	4.96	4.99	2.22	9.47
DISTANZE PROGRESSIVE	7.17	12.16	13.66	18.61	23.6	25.81	35.28
QUOTE ALTIMETRICHE		0.00	0.00	0.1	0.25	2.2	2.2

Sezione A-A' scala 1:200



DISTANZE PARZIALI	4.17	2.4	1.79	1.95	7.28	2.39
DISTANZE PROGRESSIVE	4.17	6.57	8.36	10.31	17.63	20.02
QUOTE ALTIMETRICHE		0.1	0.00	0.9	0.9	0.9

Sezione B-B' scala 1:200



DISTANZE PARZIALI	6.93	5	1.5	4.61	5.26	3.09	10.55	1.67
DISTANZE PROGRESSIVE	6.93	11.93	13.43	18.04	23.3	26.39	36.94	38.61
QUOTE ALTIMETRICHE		0.00	0.1	0.1	0.1	2.06	2.01	2.06

Sezione C-C' scala 1:200